

Appendix E

Public Health Framework for assessing Alcohol Licensing

Annual Report – Ward

18th September 2013



Contents

Notes on the data	3
Brunswick and Adelaide	5
Central Hove	6
East Brighton	7
Goldsmid	8
Hangleton and Knoll	9
Hanover and Elm Grove	10
Hollingdean and Stanmer	11
Hove Park	12
Moulsecomb and Bevendean	13
North Portslade	14
Patcham	15
Preston Park	16
Queen's Park	17
Regency	18
Rottingdean Coastal	19
South Portslade	20
St. Peter's and North Laine	21
Westbourne	22
Wish	23
Withdean	24
Woodingdean	25
Ward summary grid	26
Mapping	27
Appendix 1: Alcohol attributable fractions	37
Appendix 2: Failed test purchases for alcohol	38

Notes on the data

Crime and disorder data

All crime and disorder data except for shoplifting of alcohol offences refer to 2012-13 data. Due to low numbers, alcohol shoplifting data combines 2010-11, 2011-12 and 2012-13 data.

Data used in this report is downloaded from the live system at Sussex Police each month. This data has not been audited or verified by statisticians at Police HQ, therefore it represents a reflection of crime and disorder in the area, rather than the authorised and fully verified 'performance data'. Only those crimes and incidents where there was sufficient location information to map to ward level have been included.

It is not considered appropriate to produce a rate per ward as comparison between an incident (which is likely to occur away from an individual's place of residence) and a resident population would not be correct.

Injury Violence includes all assault with injury offences, as well as violence against the person offences of greater severity such as murder, attempted murder and manslaughter

Non-injury assaults include common assault and battery offences, racially or religiously motivated common assault or beating offences, and assaults on a constable

Data has been extracted using 'CADDIE' categories and police input date, but excludes those offences which occurred before June 2008. This is particularly relevant to sexual offences which are often reported historically

All *Violence Against the Person* offences include injury violence, non-injury assaults, as well as a range of harassment and other offences.

Total crime where the victim or the suspect has been recorded as under the influence of alcohol uses 'under the influence' markers on the police database and records those suspects or victims who were perceived to be under the influence of either alcohol, or alcohol and drugs, when the offence took place. These markers are not mandatory and in total, approximately 15-16% of crimes have this information recorded regarding the suspect or victim.

Police recorded alcohol related incidents are extracted from the police incident database using a search on the free text field (filled out as the call comes in) on the words alcohol, drink and drunk.

Shoplifting of alcohol offences data will be influenced by those wards where there are supermarkets or larger stores, as a large proportion of reported thefts of alcohol occur in this type of shop, where there are often security guards and reporting to the police is therefore more common.

Health data

Rates per 100,000 are for adults aged 15-59 years

Increasing risk or higher risk drinking data is derived from the Health Counts Survey 2012. Increasing risk is defined as usual consumption of between 22 and 50 units of alcohol per week for men and between 15 and 35 units of alcohol per week for women. Higher risk drinking is defined as usual consumption of over 50 units of alcohol per week for men, and over 35 units of alcohol per week for women. Based upon place of residence.

Alcohol suspected ambulance call outs data is for 2012/13 financial year and comes from South East Coast Ambulance Service. Ambulance patient clinical records (PCR) now contain an indicator for whether the crew on the scene suspect that alcohol has been involved with the incident. This has been collected since April 2010. The guidance for collecting this data asks to mark a box with an 'x' if alcohol is suspected, so it is very much a judgment call of the crew on the scene, which will differ between individuals. Due to scanning and data validation, PCR data is 80-90% accurate. Given these caveats, it will not be a complete picture of the burden that alcohol places on ambulance services. However, it provides some quantification of alcohol related ambulance call outs, demographics of patients involved in such incidents, geographical areas where the numbers are higher and the health implications (whether resulting in falls, overdose/poisoning etc). Based upon location of call out.

A&E attendances with a record of alcohol data is for 2008-2010 and is based on a key word search for the word searched related to alcohol applied to an extract from the Symphony A&E system Brighton & Sussex University Hospital Trust. These figures are collated from key word searches on the electronic A&E record and so could well underestimate these numbers – there were 3,760 attendances identified over the three year period. Based upon place of residence.

A&E attendances between 8pm and 5am due to assault data comes from Local Secondary User Service extracts accessed via Sussex Database. Attendances at A&E due to assault (patient group 20) between 8pm and 5am (inclusive) has been used as a proxy for alcohol related A&E attendances during the night time economy.

A&E attendance data does not include Minor Injury Unit (MIU) data. It is assumed that MIUs will have very minimal, if any, impact on attendances reported on within this report as the MIUs are only open 8am to 8pm, not during the night time economy.

Data presented is for 2011/12 and 2012/13. Analysis by geography is based on the postcode of the patient, not where the assault took place, and is irrespective of which A&E unit they attended.

Around three-quarters (77%) of attendances are for males. The figure shows the age distribution and profile for A&E assault attendances over the two year period. Two thirds (66%) of attendances are in those aged 18-34 years with few attendances in the under 15's and over 60's. There were 90 attendances (7%) for those aged under 18 years.

Alcohol related inpatient hospital admissions data is for 2011/12 period and comes from Local Secondary User Service extracts accessed via Sussex Database. Hospital admissions that are wholly attributable to alcohol are included as well as a proportion of diseases and injuries where alcohol can play a part (alcohol attributable fractions). The indicator is a directly age-standardised rate and measures the rate of alcohol harm related hospital admissions per 100,000 population. See Appendix 1 for detailed information on the indicator and the alcohol attributable fractions. Place upon place of residence.

Brunswick and Adelaide



Crime and Disorder Data	No.	Rank (1=worst)		
All Violence against the person:	132	8		
All Injury Violence	42	11		
Non-Injury Assault	66	7		
Sexual Offences	12	=9		
Criminal Damage	107	13		
Total crime where victim recorded under influence of alcohol	33	5		
Total crime where suspect recorded under influence of alcohol	49	7		
Police recorded alcohol related incidents	176	6		
Shoplifting of alcohol offences	48	5		
Health Data				
	%	Rank	Significance	
Increasing risk or higher risk drinking	19%	9	NS	
	Number	Rank		
Alcohol suspected ambulance call outs	189	7		
	Number	Rate per 100,000	Rank	Significance
A&E attendances with a record of alcohol	180	7.3	8	NS
	Number	Rate per 100,000	Rank	Significance
A&E attendances between 8pm and 5am due to assault	54	330	8	NS
	Number	Directly age std rate per 100,000	Rank	Significance
Alcohol related inpatient hospital admissions	161	1,843.1	10	NS

Central Hove



Crime and Disorder Data	No.	Rank (1=worst)
All Violence against the person:	125	=12
All Injury Violence	44	=9
Non-Injury Assault	42	15
Sexual Offences	5	=19
Criminal Damage	112	12
Total crime where victim recorded under influence of alcohol	27	8
Total crime where suspect recorded under influence of alcohol	45	8
Police recorded alcohol related incidents	257	4
Shoplifting of alcohol offences	73	3

Health Data				
	%	Rank	Significance	
Increasing risk or higher risk drinking	19%	10	NS	
	Number	Rank		
Alcohol suspected ambulance call outs	211	5		
	Number	Rate per 100,000	Rank	Significance
A&E attendances with a record of alcohol	120	6.0	12	NS
	Number	Rate per 100,000	Rank	Significance
A&E attendances between 8pm and 5am due to assault	28	210	16	SigLow
	Number	Directly age std rate per 100,000	Rank	Significance
Alcohol related inpatient hospital admissions	177	1,947.0	7	NS

6

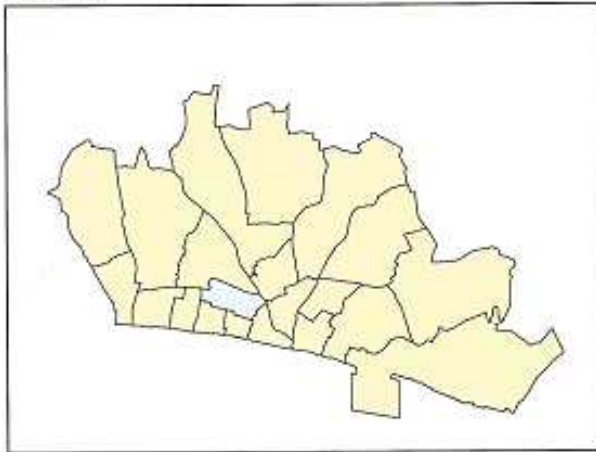
East Brighton



Crime and Disorder Data	No.	Rank (1=worst)
All Violence against the person:	305	4
All Injury Violence	85	4
Non-Injury Assault	135	4
Sexual Offences	22	4
Criminal Damage	273	3
Total crime where victim recorded under influence of alcohol	56	4
Total crime where suspect recorded under influence of alcohol	107	4
Police recorded alcohol related incidents	180	5
Shoplifting of alcohol offences	13	13

Health Data				
	%	Rank	Significance	
Increasing risk or higher risk drinking	13%	16	NS	
	Number	Rank		
Alcohol suspected ambulance call outs	277	4		
	Number	Rate per 100,000	Rank	Significance
A&E attendances with a record of alcohol	362	13.3	3	SigHigh
	Number	Rate per 100,000	Rank	Significance
A&E attendances between 8pm and 5am due to assault	107	587.9	2	SigHigh
	Number	Directly age std rate per 100,000	Rank	Significance
Alcohol related inpatient hospital admissions	442	2,926.5	2	SigHigh

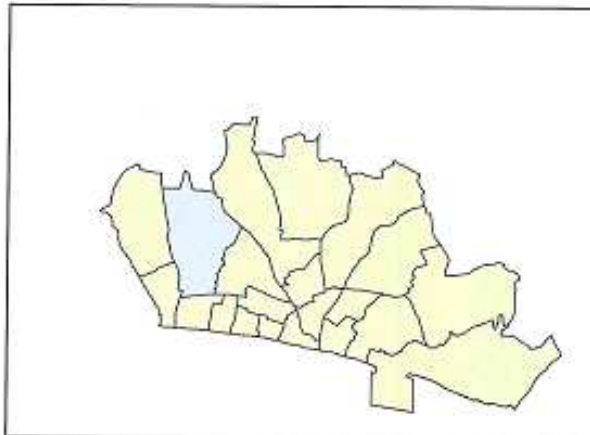
Goldsmid



Crime and Disorder Data	No.	Rank (1=worst)
All Violence against the person:	92	16
All Injury Violence	34	=15
Non-Injury Assault	34	18
Sexual Offences	7	=14
Criminal Damage	133	10
Total crime where victim recorded under influence of alcohol	15	=15
Total crime where suspect recorded under influence of alcohol	34	13
Police recorded alcohol related incidents	109	=10
Shoplifting of alcohol offences	3	=19

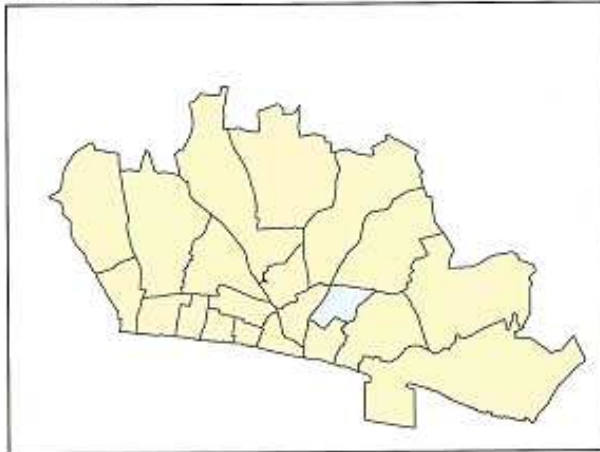
Health Data				
	%	Rank	Significance	
Increasing risk or higher risk drinking	24%	3	NS	
	Number	Rank		
Alcohol suspected ambulance call outs	158	8		
	Number	Rate per 100,000	Rank	Significance
A&E attendances with a record of alcohol	265	8.2	7	SigHigh
	Number	Rate per 100,000	Rank	Significance
A&E attendances between 8pm and 5am due to assault	59	273	11	NS
	Number	Directly age std rate per 100,000	Rank	Significance
Alcohol related inpatient hospital admissions	331	1,893.2	8	NS

Hangleton and Knoll



Crime and Disorder Data	No.	Rank (1=worst)		
All Violence against the person:	138	7		
All Injury Violence	47	8		
Non-Injury Assault	55	10		
Sexual Offences	12	=9		
Criminal Damage	134	9		
Total crime where victim recorded under influence of alcohol	13	17		
Total crime where suspect recorded under influence of alcohol	29	=15		
Police recorded alcohol related incidents	111	9		
Shoplifting of alcohol offences	32	6		
Health Data				
	%	Rank	Significance	
Increasing risk or higher risk drinking	10%	18	NS	
	Number	Rank		
Alcohol suspected ambulance call outs	107	14		
	Number	Rate per 100,000	Rank	Significance
A&E attendances with a record of alcohol	142	5.7	13	NS
	Number	Rate per 100,000	Rank	Significance
A&E attendances between 8pm and 5am due to assault	38	230	14	NS
	Number	Directly age std rate per 100,000	Rank	Significance
Alcohol related inpatient hospital admissions	315	1,728.0	12	NS

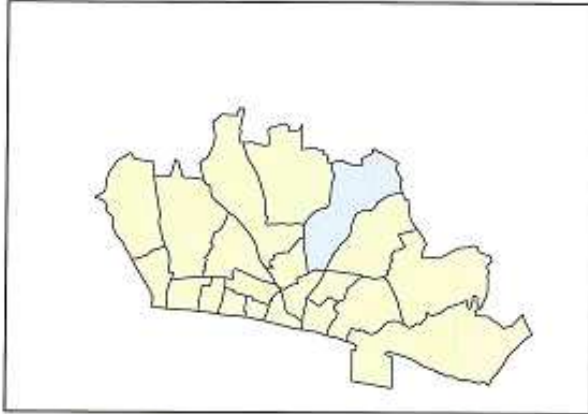
Hanover and Elm Grove



Crime and Disorder Data	No.	Rank (1=worst)
All Violence against the person:	126	11
All Injury Violence	54	7
Non-Injury Assault	45	13
Sexual Offences	6	=17
Criminal Damage	202	5
Total crime where victim recorded under influence of alcohol	30	7
Total crime where suspect recorded under influence of alcohol	50	6
Police recorded alcohol related incidents	109	=10
Shoplifting of alcohol offences	3	=19

Health Data				
	%	Rank	Significance	
Increasing risk or higher risk drinking	22%	4	NS	
	Number	Rank		
Alcohol suspected ambulance call outs	130	10		
	Number	Rate per 100,000	Rank	Significance
A&E attendances with a record of alcohol	224	6.1	11	NS
	Number	Rate per 100,000	Rank	Significance
A&E attendances between 8pm and 5am due to assault	64	263	12	NS
	Number	Directly age std rate per 100,000	Rank	Significance
Alcohol related inpatient hospital admissions	241	1,789.7	11	NS

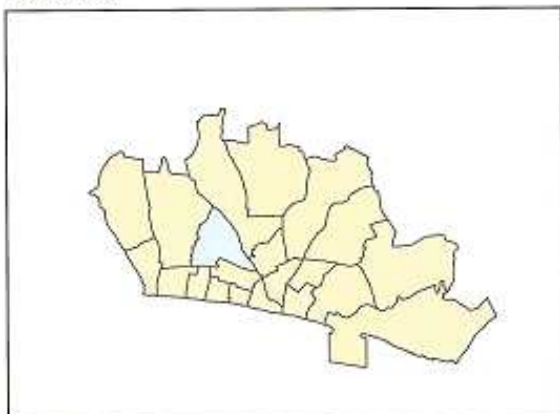
Hollingdean and Stanmer



Crime and Disorder Data	No.	Rank (1=worst)
All Violence against the person:	194	6
All Injury Violence	76	5
Non-Injury Assault	78	6
Sexual Offences	14	6
Criminal Damage	157	7
Total crime where victim recorded under influence of alcohol	32	6
Total crime where suspect recorded under influence of alcohol	51	5
Police recorded alcohol related incidents	108	12
Shoplifting of alcohol offences	6	=16

Health Data				
	%	Rank	Significance	
Increasing risk or higher risk drinking	21%	7	NS	
	Number	Rank		
Alcohol suspected ambulance call outs	206	6		
	Number	Rate per 100,000	Rank	Significance
A&E attendances with a record of alcohol	229	6.9	9	NS
	Number	Rate per 100,000	Rank	Significance
A&E attendances between 8pm and 5am due to assault	75	337	7	NS
	Number	Directly age std rate per 100,000	Rank	Significance
Alcohol related inpatient hospital admissions	306	2,190.6	6	SigHigh

Hove Park



Crime and Disorder Data	No.	Rank (1=worst)
All Violence against the person:	73	19
All Injury Violence	27	19
Non-Injury Assault	39	16
Sexual Offences	3	21
Criminal Damage	86	16
Total crime where victim recorded under influence of alcohol	9	20
Total crime where suspect recorded under influence of alcohol	18	20
Police recorded alcohol related incidents	37	20
Shoplifting of alcohol offences	15	12

Health Data				
	%	Rank	Significance	
Increasing risk or higher risk drinking	14%	15	NS	
	Number	Rank		
Alcohol suspected ambulance call outs	48	21		
	Number	Rate per 100,000	Rank	Significance
A&E attendances with a record of alcohol	62	1.6	21	SigLow
	Number	Rate per 100,000	Rank	Significance
A&E attendances between 8pm and 5am due to assault	18	149	21	SigLow
	Number	Directly age std rate per 100,000	Rank	Significance
Alcohol related inpatient hospital admissions	166	1,237.3	19	SigLow

Moulsecomb and Bevendean



Crime and Disorder Data	No.	Rank (1=worst)
All Violence against the person:	214	5
All Injury Violence	62	6
Non-Injury Assault	95	5
Sexual Offences	17	5
Criminal Damage	189	6
Total crime where victim recorded under influence of alcohol	22	=9
Total crime where suspect recorded under influence of alcohol	44	9
Police recorded alcohol related incidents	131	7
Shoplifting of alcohol offences	5	18

Health Data				
	%	Rank	Significance	
Increasing risk or higher risk drinking	8%	20	SigLow	
	Number	Rank		
Alcohol suspected ambulance call outs	152	9		
	Number	Rate per 100,000	Rank	Significance
A&E attendances with a record of alcohol	230	12.7	4	SigHigh
	Number	Rate per 100,000	Rank	Significance
A&E attendances between 8pm and 5am due to assault	131	519	3	SigHigh
	Number	Directly age std rate per 100,000	Rank	Significance
Alcohol related inpatient hospital admissions	326	2,246.2	4	SigHigh

North Portslade



Crime and Disorder Data	No.	Rank (1=worst)
All Violence against the person:	75	18
All Injury Violence	29	=17
Non-Injury Assault	31	20
Sexual Offences	7	=14
Criminal Damage	74	19
Total crime where victim recorded under influence of alcohol	20	=11
Total crime where suspect recorded under influence of alcohol	23	19
Police recorded alcohol related incidents	36	21
Shoplifting of alcohol offences	0	21

Health Data				
	%	Rank	Significance	
Increasing risk or higher risk drinking	12%	17	NS	
	Number	Rank		
Alcohol suspected ambulance call outs	60	20		
	Number	Rate per 100,000	Rank	Significance
A&E attendances with a record of alcohol	95	3.9	18	SigLow
	Number	Rate per 100,000	Rank	Significance
A&E attendances between 8pm and 5am due to assault	30	248	13	NS
	Number	Directly age standardised rate per 100,000 people	Rank	Significance
Alcohol related inpatient hospital admissions	197	1,651.4	13	NS

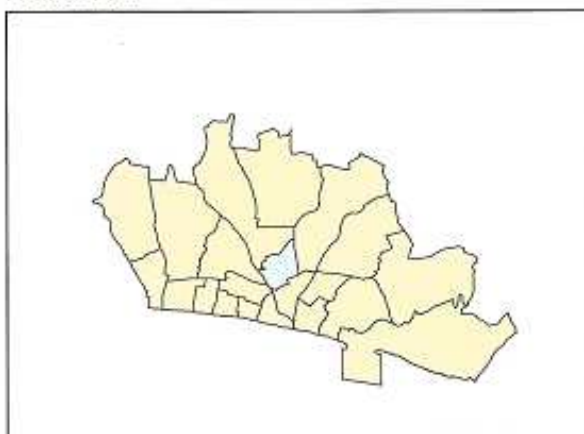
Patcham



Crime and Disorder Data	No.	Rank (1=worst)
All Violence against the person:	127	10
All Injury Violence	35	14
Non-Injury Assault	61	=8
Sexual Offences	7	=14
Criminal Damage	143	8
Total crime where victim recorded under influence of alcohol	15	=15
Total crime where suspect recorded under influence of alcohol	37	10
Police recorded alcohol related incidents	79	15
Shoplifting of alcohol offences	17	10

Health Data				
	%	Rank	Significance	
Increasing risk or higher risk drinking	8%	21	SigLow	
	Number	Rank		
Alcohol suspected ambulance call outs	98	15		
	Number	Rate per 100,000	Rank	Significance
A&E attendances with a record of alcohol	129	4.1	17	SigLow
	Number	Rate per 100,000	Rank	Significance
A&E attendances between 8pm and 5am due to assault	61	375	5	NS
	Number	Directly age std rate per 100,000	Rank	Significance
Alcohol related inpatient hospital admissions	283	1,533.3	16	SigLow

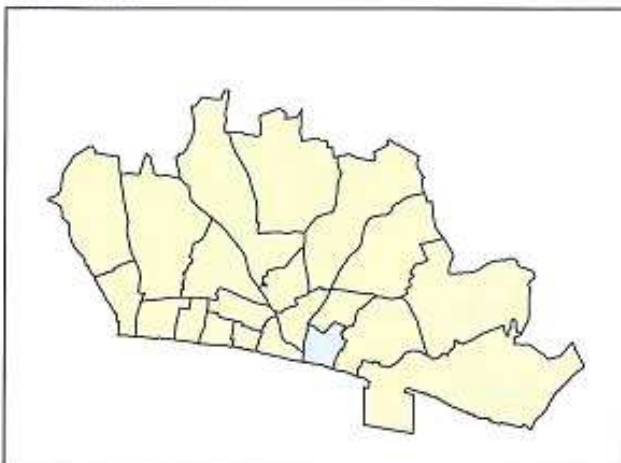
Preston Park



Crime and Disorder Data	No.	Rank (1=worst)
All Violence against the person:	117	14
All Injury Violence	41	12
Non-Injury Assault	47	12
Sexual Offences	13	=7
Criminal Damage	78	18
Total crime where victim recorded under influence of alcohol	22	=9
Total crime where suspect recorded under influence of alcohol	29	=15
Police recorded alcohol related incidents	88	14
Shoplifting of alcohol offences	7	15

Health Data				
	%	Rank	Significance	
Increasing risk or higher risk drinking	17%	13	NS	
	Number	Rank		
Alcohol suspected ambulance call outs	113	12		
	Number	Rate per 100,000	Rank	Significance
A&E attendances with a record of alcohol	135	4.3	15	SigLow
	Number	Rate per 100,000	Rank	Significance
A&E attendances between 8pm and 5am due to assault	47	227	15	SigLow
	Number	Directly age std rate per 100,000	Rank	Significance
Alcohol related inpatient hospital admissions	200	1,407.6	18	SigLow

Queen's Park



Crime and Disorder Data	No.	Rank (1=worst)
All Violence against the person:	515	3
All Injury Violence	189	3
Non-Injury Assault	207	3
Sexual Offences	37	2
Criminal Damage	279	2
Total crime where victim recorded under influence of alcohol	116	3
Total crime where suspect recorded under influence of alcohol	178	3
Police recorded alcohol related incidents	412	3
Shoplifting of alcohol offences	26	7

Health Data				
	%	Rank	Significance	
Increasing risk or higher risk drinking	26%	2	NS	
	Number	Rank		
Alcohol suspected ambulance call outs	618	3		
	Number	Rate per 100,000	Rank	Significance
A&E attendances with a record of alcohol	447	18.7	1	SigHigh
	Number	Rate per 100,000	Rank	Significance
A&E attendances between 8pm and 5am due to assault	94	448	4	SigHigh
	Number	Directly age std rate per 100,000	Rank	Significance
Alcohol related inpatient hospital admissions	587	3,640.0	1	SigHigh

Regency



Crime and Disorder Data	No.	Rank (1=worst)
All Violence against the person:	911	1
All Injury Violence	409	1
Non-Injury Assault	313	1
Sexual Offences	59	1
Criminal Damage	262	4
Total crime where victim recorded under influence of alcohol	248	1
Total crime where suspect recorded under influence of alcohol	362	1
Police recorded alcohol related incidents	659	2
Shoplifting of alcohol offences	78	2

Health Data				
	%	Rank	Significance	
Increasing risk or higher risk drinking	17%	12	NS	
	Number	Rank		
Alcohol suspected ambulance call outs	1,119	1		
	Number	Rate per 100,000	Rank	Significance
A&E attendances with a record of alcohol	247	10.6	5	SigHigh
	Number	Rate per 100,000	Rank	Significance
A&E attendances between 8pm and 5am due to assault	45	282	10	NS
	Number	Directly age std rate per 100,000	Rank	Significance
Alcohol related inpatient hospital admissions	225	2,236.2	5	SigHigh

Rottingdean Coastal



Crime and Disorder Data	No.	Rank (1=worst)
All Violence against the person:	125	=12
All Injury Violence	34	=15
Non-Injury Assault	50	11
Sexual Offences	11	=11
Criminal Damage	113	11
Total crime where victim recorded under influence of alcohol	18	=13
Total crime where suspect recorded under influence of alcohol	35	12
Police recorded alcohol related incidents	92	13
Shoplifting of alcohol offences	65	4

Health Data				
	%	Rank	Significance	
Increasing risk or higher risk drinking	16%	14	NS	
	Number	Rank		
Alcohol suspected ambulance call outs	95	16		
	Number	Rate per 100,000	Rank	Significance
A&E attendances with a record of alcohol	77	1.7	20	SigLow
	Number	Rate per 100,000	Rank	Significance
A&E attendances between 8pm and 5am due to assault	45	290	9	NS
	Number	Directly age std rate per 100,000	Rank	Significance
Alcohol related inpatient hospital admissions	245	1,179.9	20	SigLow

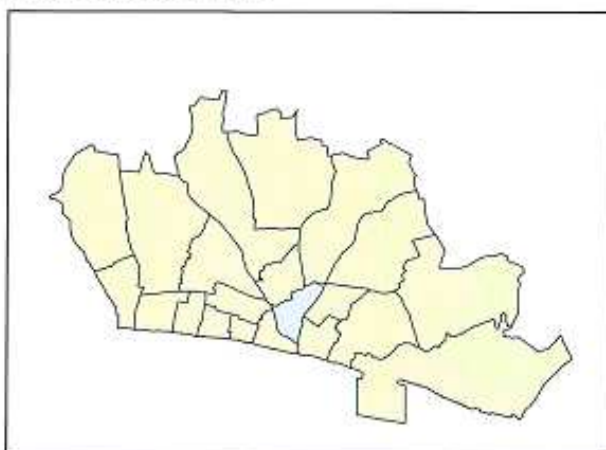
South Portslade



Crime and Disorder Data	No.	Rank (1=worst)
All Violence against the person:	131	9
All Injury Violence	44	=9
Non-Injury Assault	61	=8
Sexual Offences	11	=11
Criminal Damage	98	14
Total crime where victim recorded under influence of alcohol	18	=13
Total crime where suspect recorded under influence of alcohol	36	11
Police recorded alcohol related incidents	113	8
Shoplifting of alcohol offences	24	=8

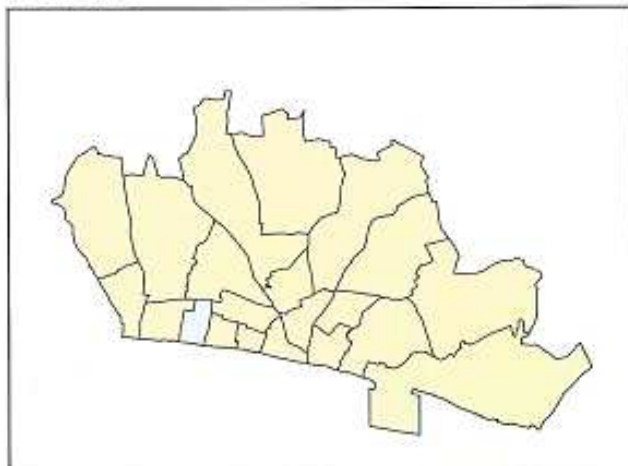
Health Data				
	%	Rank	Significance	
Increasing risk or higher risk drinking	20%	8	NS	
	Number	Rank		
Alcohol suspected ambulance call outs	115	11		
	Number	Rate per 100,000	Rank	Significance
A&E attendances with a record of alcohol	148	8.5	6	SigHigh
	Number	Rate per 100,000	Rank	Significance
A&E attendances between 8pm and 5am due to assault	47	158	20	SigLow
	Number	Directly age std rate per 100,000	Rank	Significance
Alcohol related inpatient hospital admissions	279	2,791.8	3	SigHigh

St. Peter's and North Laine



Crime and Disorder Data	No.	Rank (1=worst)		
All Violence against the person:	633	2		
All Injury Violence	201	2		
Non-Injury Assault	259	2		
Sexual Offences	34	3		
Criminal Damage	377	1		
Total crime where victim recorded under influence of alcohol	118	2		
Total crime where suspect recorded under influence of alcohol	208	2		
Police recorded alcohol related incidents	822	1		
Shoplifting of alcohol offences	218	1		
Health Data				
	%	Rank	Significance	
Increasing risk or higher risk drinking	28%	1	SigHigh	
	Number	Rank		
Alcohol suspected ambulance call outs	687	2		
	Number	Rate per 100,000	Rank	Significance
A&E attendances with a record of alcohol	257	14.2	2	SigHigh
	Number	Rate per 100,000	Rank	Significance
A&E attendances between 8pm and 5am due to assault	112	966	1	SigHigh
	Number	Directly age std rate per 100,000	Rank	Significance
Alcohol related inpatient hospital admissions	208	1,651.3	14	NS

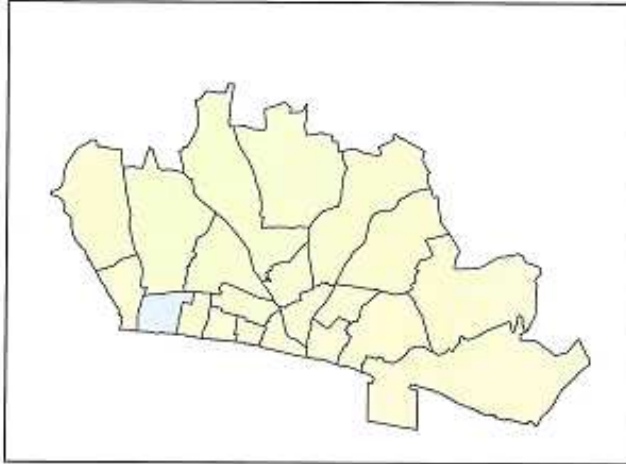
Westbourne



Crime and Disorder Data	No.	Rank (1=worst)
All Violence against the person:	65	20
All Injury Violence	23	20
Non-Injury Assault	32	19
Sexual Offences	8	13
Criminal Damage	95	15
Total crime where victim recorded under influence of alcohol	20	=11
Total crime where suspect recorded under influence of alcohol	25	17
Police recorded alcohol related incidents	63	17
Shoplifting of alcohol offences	24	=8

Health Data				
	%	Rank	Significance	
Increasing risk or higher risk drinking	19%	11	NS	
	Number	Rank		
Alcohol suspected ambulance call outs	112	13		
	Number	Rate per 100,000	Rank	Significance
A&E attendances with a record of alcohol	106	5.6	14	NS
	Number	Rate per 100,000	Rank	Significance
A&E attendances between 8pm and 5am due to assault	21	167	19	SigLow
	Number	Directly age std rate per 100,000	Rank	Significance
Alcohol related inpatient hospital admissions	219	1,877.8	9	NS

Wish



Crime and Disorder Data	No.	Rank (1=worst)		
All Violence against the person:	107	15		
All Injury Violence	36	13		
Non-injury Assault	43	14		
Sexual Offences	6	=17		
Criminal Damage	64	21		
Total crime where victim recorded under influence of alcohol	11	18		
Total crime where suspect recorded under influence of alcohol	33	14		
Police recorded alcohol related incidents	70	16		
Shoplifting of alcohol offences	16	11		
Health Data				
	%	Rank	Significance	
Increasing risk or higher risk drinking	22%	5	NS	
	Number	Rank		
Alcohol suspected ambulance call outs	75	18		
	Number	Rate per 100,000	Rank	Significance
A&E attendances with a record of alcohol	74	4.3	16	SigLow
	Number	Rate per 100,000	Rank	Significance
A&E attendances between 8pm and 5am due to assault	24	208	17	SigLow
	Number	Directly age std rate per 100,000	Rank	Significance
Alcohol related inpatient hospital admissions	181	1,590.9	15	NS

Withdean



Crime and Disorder Data	No.	Rank (1=worst)		
All Violence against the person:	81	17		
All Injury Violence	29	=17		
Non-Injury Assault	36	17		
Sexual Offences	5	=19		
Criminal Damage	80	17		
Total crime where victim recorded under influence of alcohol	9	21		
Total crime where suspect recorded under influence of alcohol	16	21		
Police recorded alcohol related incidents	41	19		
Shoplifting of alcohol offences	6	=16		
Health Data				
	%	Rank	Significance	
Increasing risk or higher risk drinking	21%	6	NS	
	Number	Rank		
Alcohol suspected ambulance call outs	80	17		
	Number	Rate per 100,000	Rank	Significance
A&E attendances with a record of alcohol	97	3.7	19	SigLow
	Number	Rate per 100,000	Rank	Significance
A&E attendances between 8pm and 5am due to assault	34	195	18	SigLow
	Number	Directly age std rate per 100,000	Rank	Significance
Alcohol related inpatient hospital admissions	196	1,082.4	21	SigLow

Woodingdean



Crime and Disorder Data	No.	Rank (1=worst)		
All Violence against the person:	58	21		
All Injury Violence	19	21		
Non-Injury Assault	20	21		
Sexual Offences	13	=7		
Criminal Damage	72	20		
Total crime where victim recorded under influence of alcohol	10	19		
Total crime where suspect recorded under influence of alcohol	24	18		
Police recorded alcohol related incidents	54	18		
Shoplifting of alcohol offences	8	14		
Health Data				
	%	Rank	Significance	
Increasing risk or higher risk drinking	9%	19	NS	
	Number	Rank		
Alcohol suspected ambulance call outs	66	19		
	Number	Rate per 100,000	Rank	Significance
A&E attendances with a record of alcohol	101	6.3	10	NS
	Number	Rate per 100,000	Rank	Significance
A&E attendances between 8pm and 5am due to assault	40	372	6	NS
	Number	Directly age std rate per 100,000	Rank	Significance
Alcohol related inpatient hospital admissions	180	1,435.5	17	SigLow

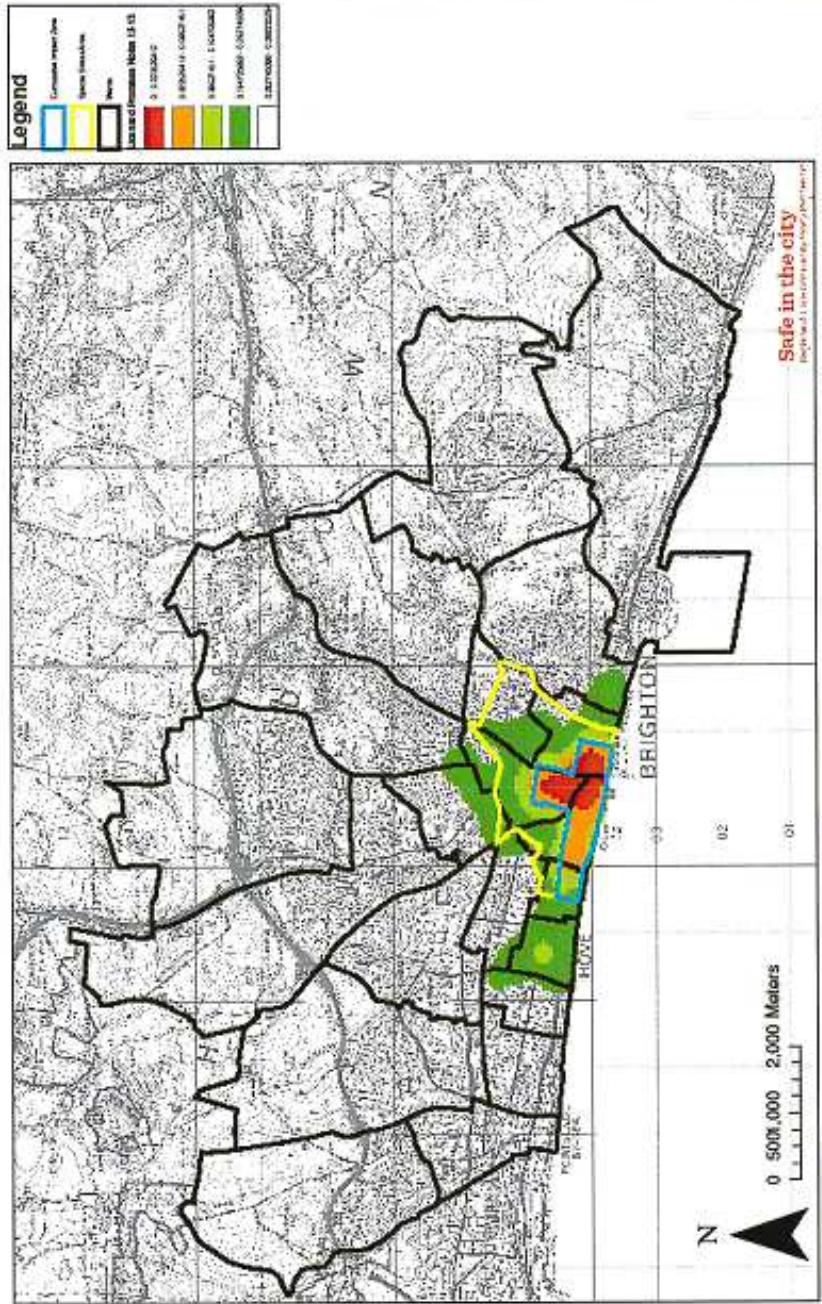
Ward summary grid (ward ranks of 21 wards where 1=worst)

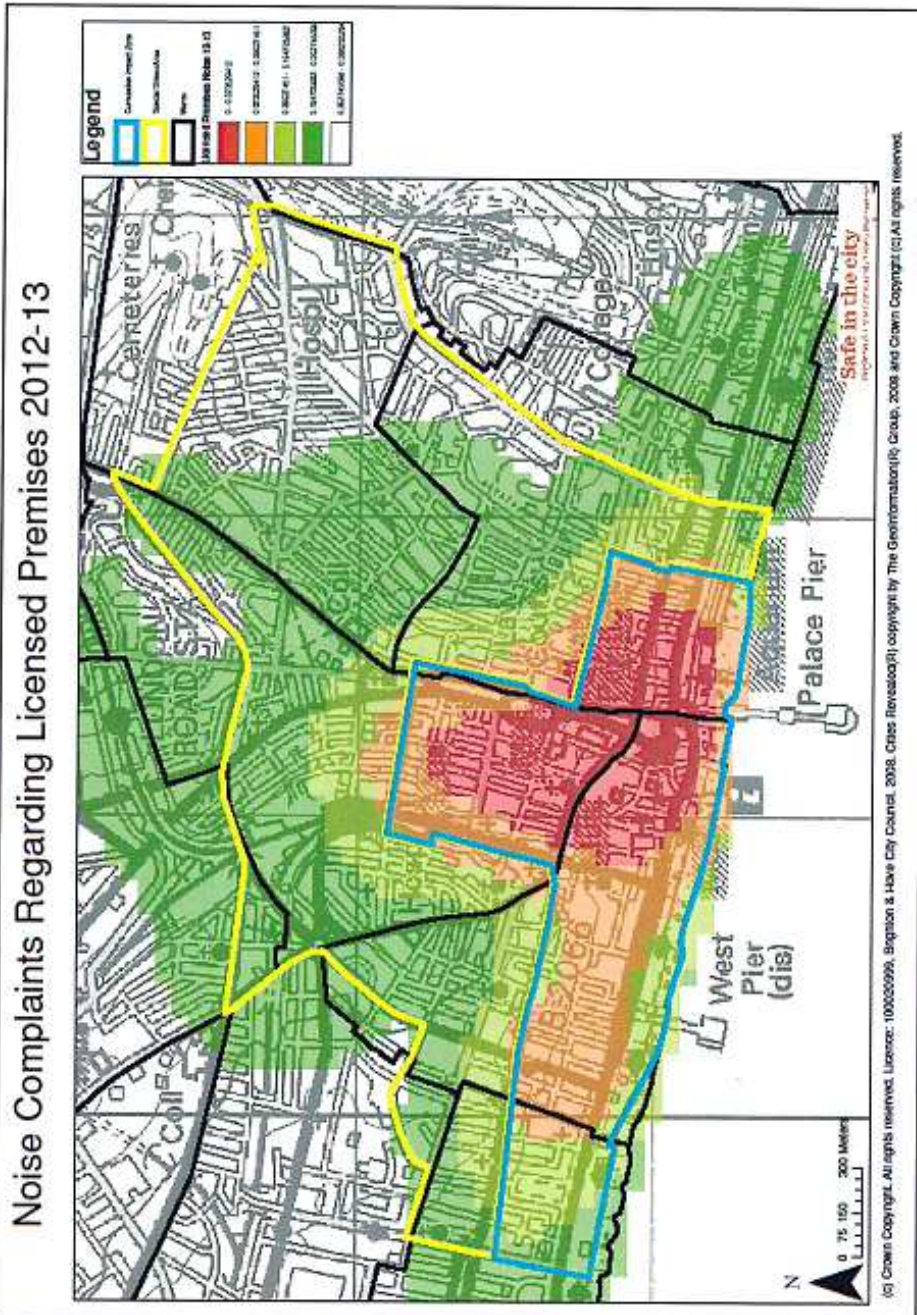
Ward	Overall average rank	Crime and disorder data average rank	All violence again the person	All Injury Violence	Non-Injury Violence	Sexual offences	Criminal damage	Total crime: victim recorded under influence of alcohol	Total crime: suspect recorded under influence of alcohol	Police recorded alcohol related incidents	Shoplifting of alcohol offences	Health data average rank	Increasing or higher risk drinking	Alcohol suspected ambulance call outs	A&E attendances with a record of alcohol	A&E attendances between bpm and 5am due to assault	Alcohol related inpatient hospital admissions
Brunswick and Adelaide	8	8	8	11	7	9	13	5	7	6	5	8	9	7	8	8	10
Central Hove	11	10	12	9	15	19	12	8	8	4	3	12	10	5	12	16	17
East Brighton	5	5	4	4	4	4	3	4	4	5	13	5	16	4	3	2	2
Goldsmid	12	14	16	15	18	14	10	15	13	10	19	7	3	8	7	11	8
Hangleton and Knoll	12	10	7	8	10	9	9	17	15	9	6	14	18	14	13	14	12
Hanover and Elm Grove	10	11	11	7	13	17	5	7	6	10	19	10	4	10	11	12	11
Hollingdean and Stanmer	7	8	6	5	6	6	7	6	5	12	16	7	7	6	9	7	6
Hove Park	19	18	19	19	16	21	16	20	20	20	12	19	15	21	21	21	19
Mouisecoomb and Bevendean	8	8	5	6	5	5	6	9	9	7	18	8	20	9	4	3	4
North Portslade	17	18	18	17	20	14	19	11	19	21	21	16	17	20	18	13	13
Patcham	13	12	10	14	8	14	8	15	10	15	10	15	21	15	17	5	16
Preston Park	14	13	14	12	12	7	18	9	15	14	15	15	13	12	15	15	18
Queen's Park	3	3	3	3	3	2	2	3	3	3	7	2	2	3	1	4	1
Regency	3	2	1	1	1	1	4	1	1	2	2	7	12	1	5	10	5
Rottingdean Coastal	13	11	12	15	11	11	11	13	12	13	4	16	14	16	20	9	20
South Portslade	10	10	9	9	8	11	14	13	11	8	8	10	8	11	6	20	3
St. Peter's and North Laine	3	2	2	2	2	3	1	2	2	1	1	4	1	2	2	1	14
Westbourne	15	16	20	20	19	13	15	11	17	17	8	13	11	13	14	19	9
Wish	15	15	15	13	14	17	21	18	14	16	11	14	5	18	16	17	15
Withdean	18	18	17	17	17	19	17	21	21	19	16	16	6	17	19	18	21
Woodingdean	16	18	21	21	21	7	20	19	18	18	14	14	19	19	10	6	17

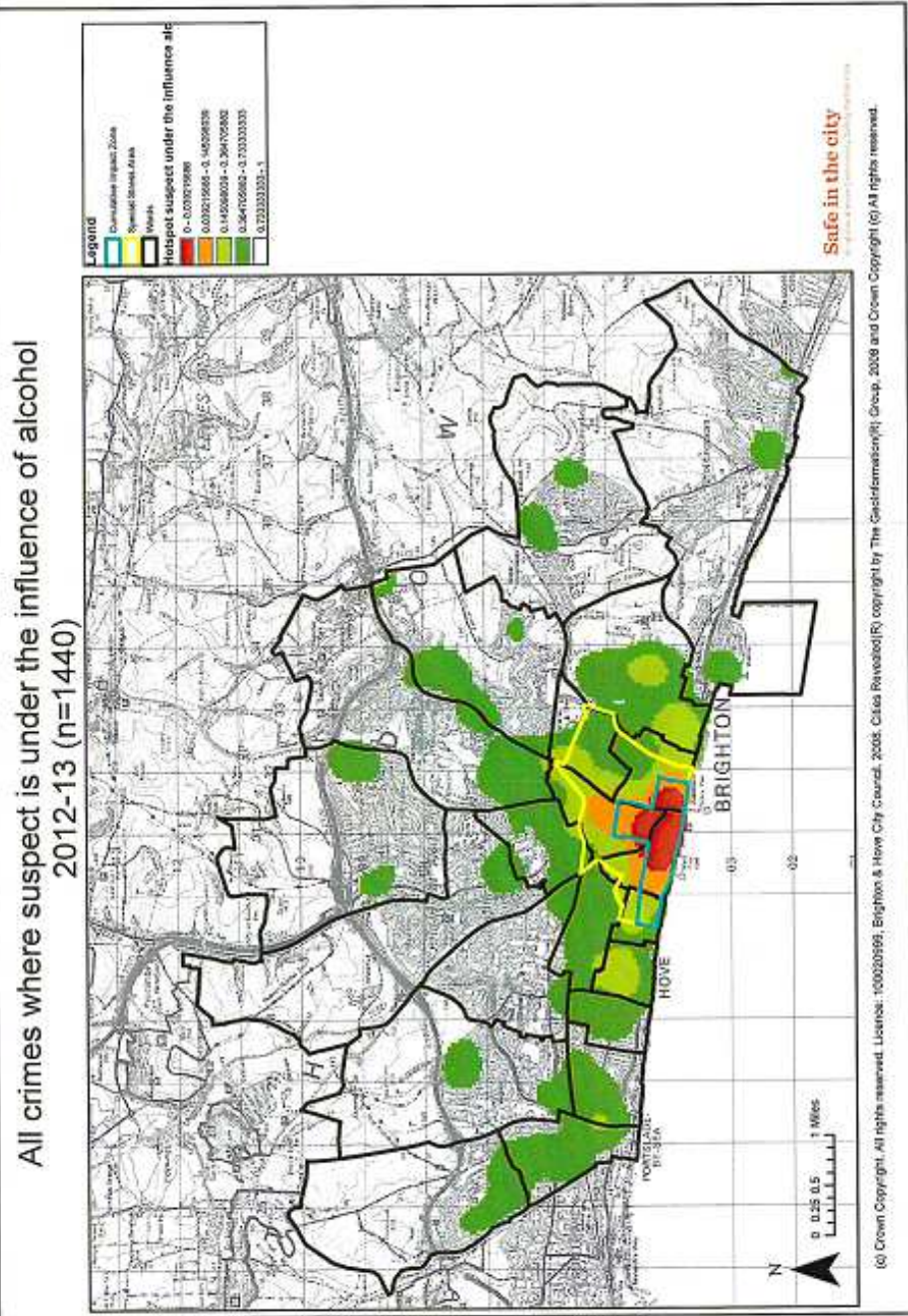
Mapping

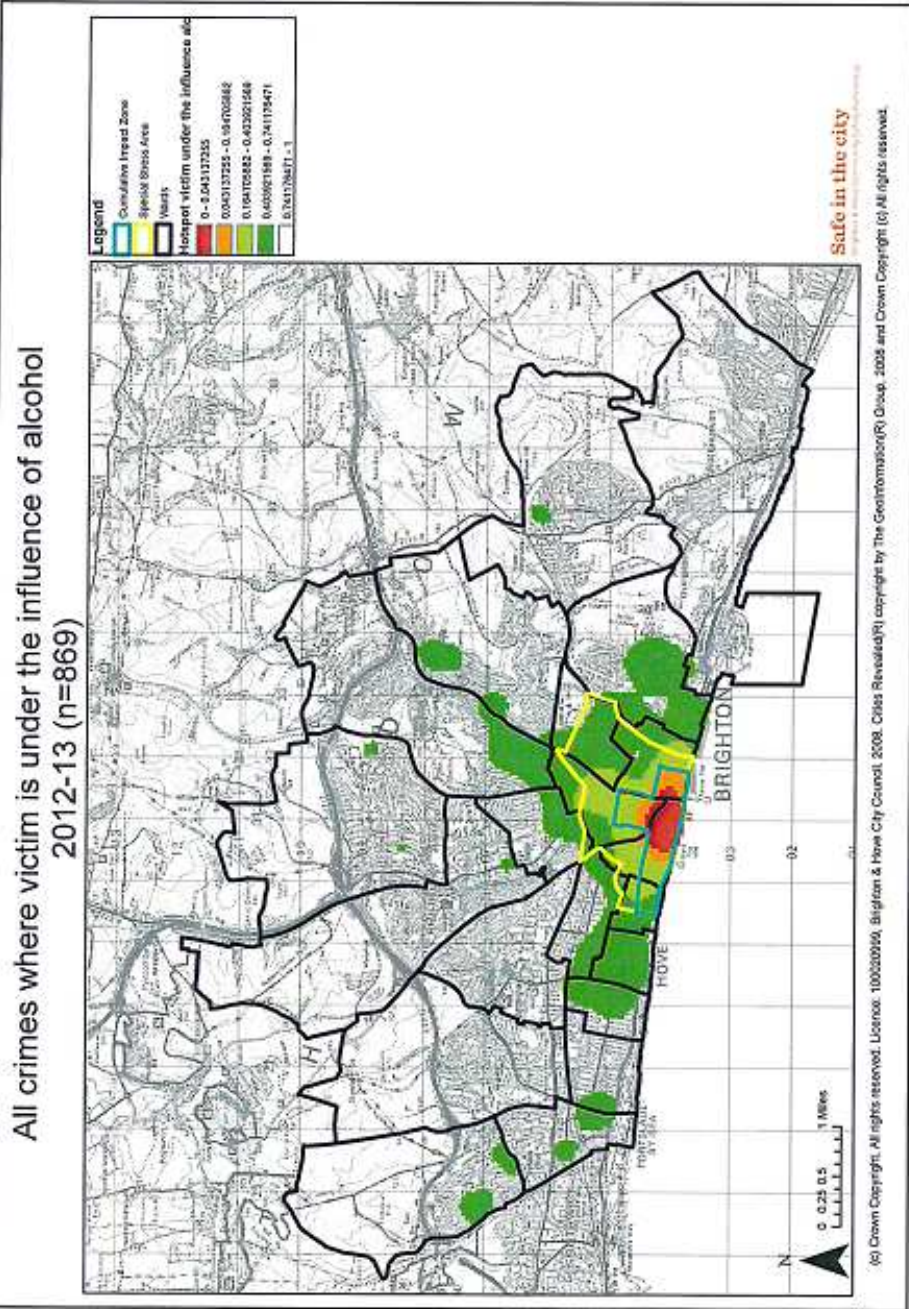
1. Noise complaints regarding licensed premises 2012-13
2. Noise complaints regarding licensed premises 2012-13 (detail)
3. All crimes where suspect is under the influence of alcohol 2012-13
4. All crimes where the victim is under the influence of alcohol 2012-13
5. Police recorded alcohol related incidents 2012-13
6. Treatment centres, commissioned band 2 and band 3 accommodation August 2013
7. Treatment centres, commissioned band 2 and band 3 accommodation and off-licences August 2013
8. All licensed premises August 2013
9. Count of off licenses per ward and treatment centres and commissioned band 2 and band 3 accommodation August 2013

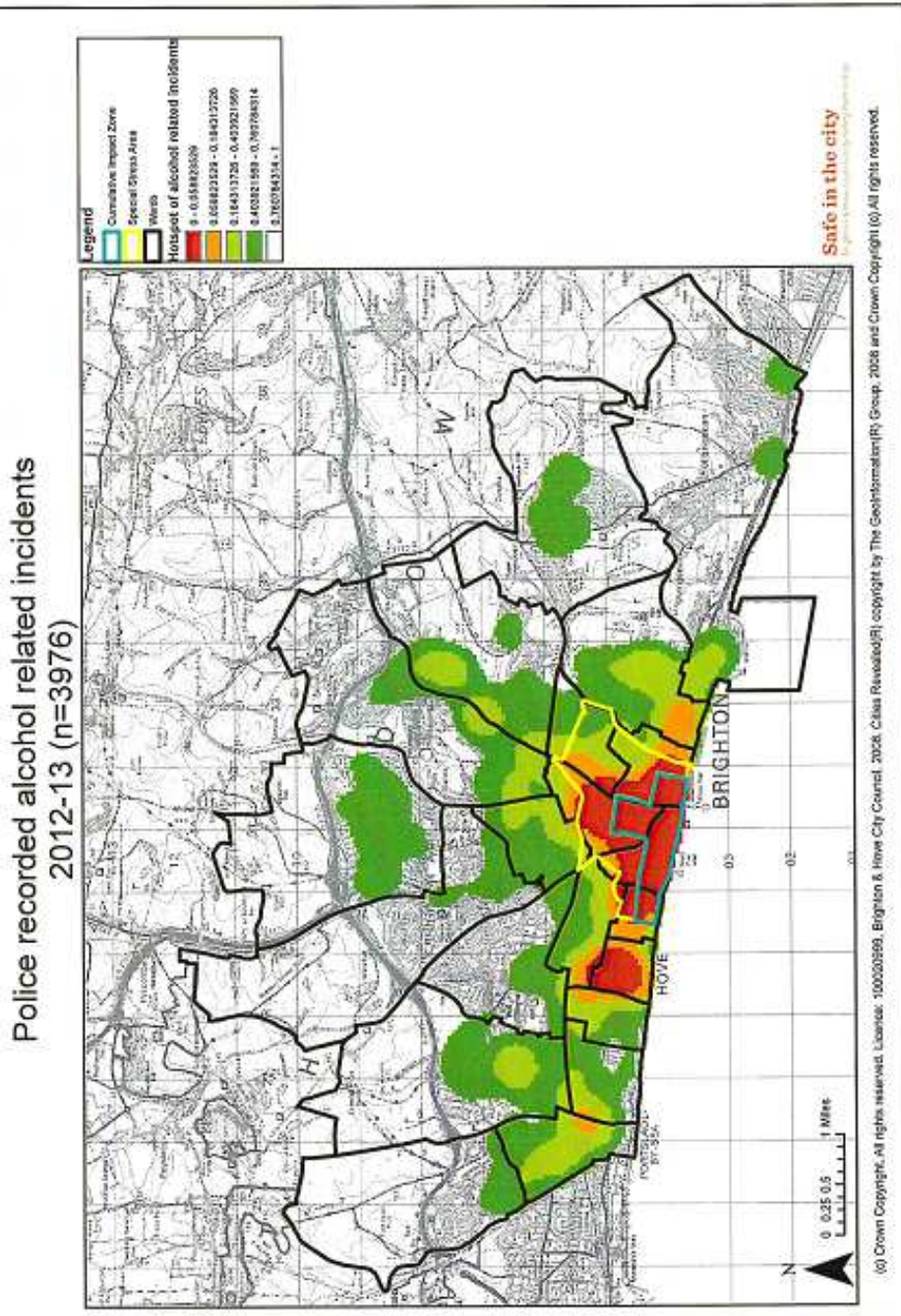
Noise Complaints Regarding Licensed Premises 2012-13 (n=245)



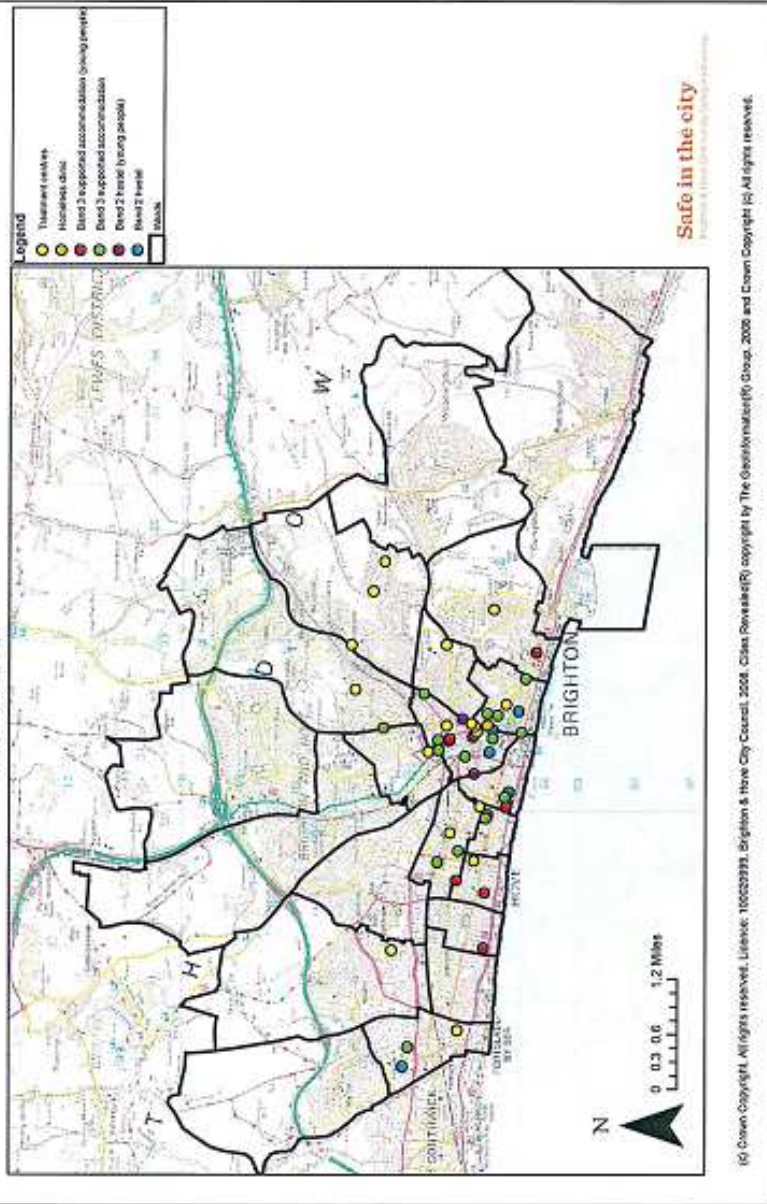






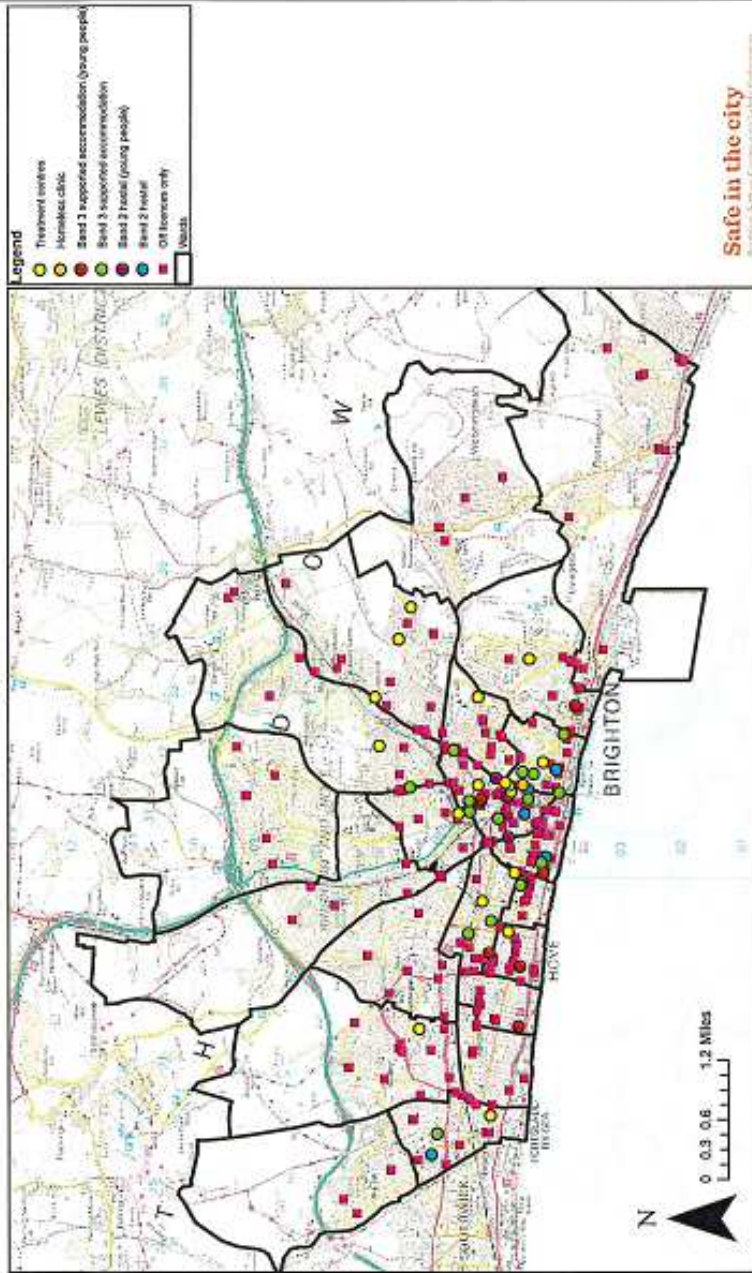


Treatment Centres, Commissioned Band 2 and Band 3 Accommodation
August 2013



The map shows all alcohol treatment centres, and local authority commissioned band 2 and 3 accommodation. Band 2 accommodation is hostel accommodation with 24 hour waking night staff and key work support in a hostel environment. Additional work and learning and life skills are offered as well as behavioural support and alcohol and drugs nurses. Band 3 accommodation is mostly self contained accommodation although a few are shared houses for those ready to move on from hostels, offering either floating support (i.e. support worker visiting once a week) or office on site.

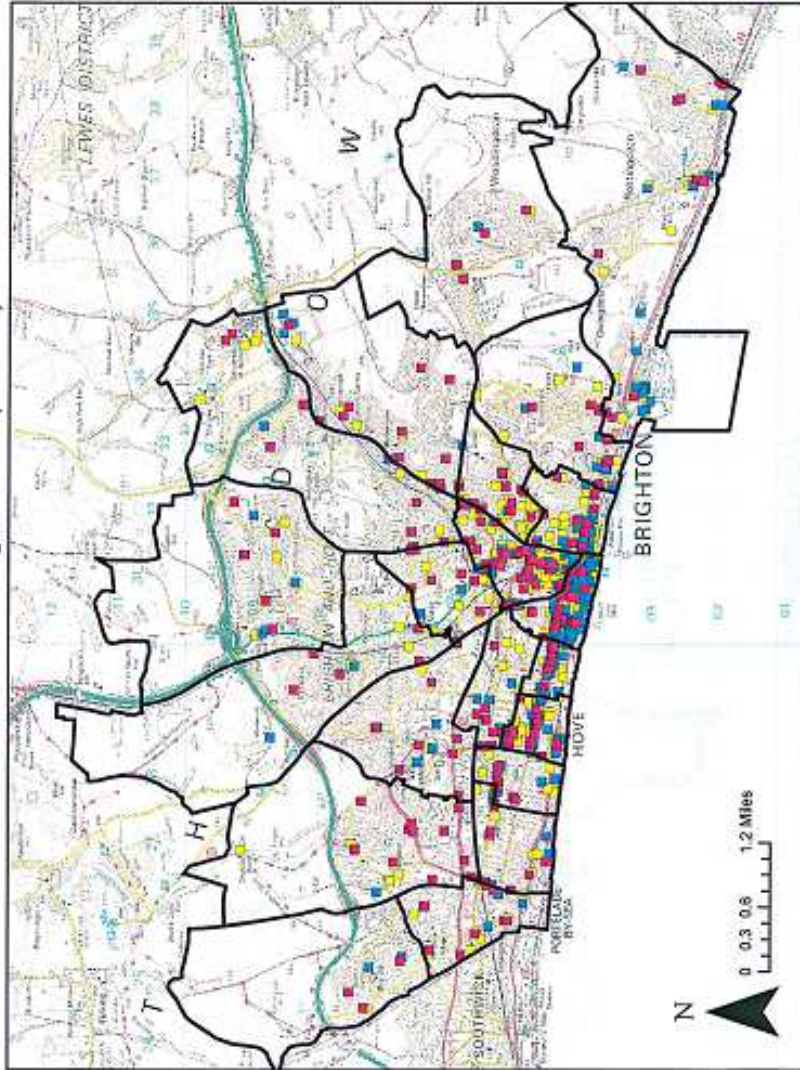
Treatment Centres, Commissioned Band 2 and Band 3 Accommodation and Off-Licences August 2013



Safe in the city
 Brighton & Hove City Council

(c) Crown Copyright. All rights reserved. License: 100020099, Brighton & Hove City Council, 2008. Cities Revealed(R) copyright by The GeoInformation(R) Group, 2008 and Crown Copyright (c) All rights reserved.

**All Licensed Premises
August 2013 (n=1011)**



Legend

Wards	
Off-licenses only	Red square
On-licenses only	Blue square
Both on and off sales	Yellow square

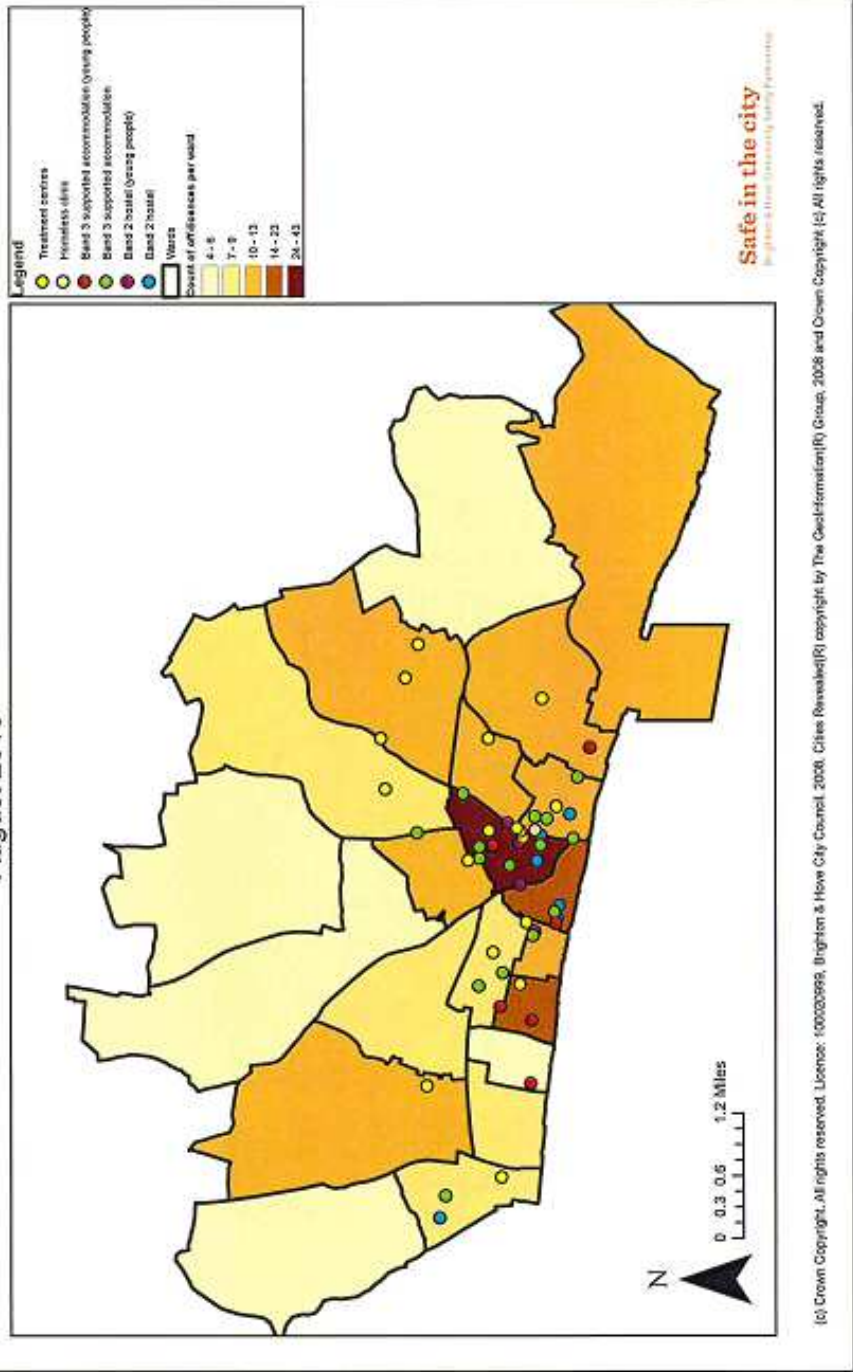
Licensed Premise Type	No.
Off-licenses only	282
On-licenses only	290
Both on and off sales	469

I: Figures as of 08/08/2013

Safe in the city
For a safer city, we need a stronger community. Safer. Smarter. Stronger.

(c) Crown Copyright. All rights reserved. License: 100020202, Brighton & Hove City Council, 2008. Cities Revealed(R) copyright by The GeoInformation(R) Group, 2008 and Crown Copyright (c). All rights reserved.

Count of Off-Licences per Ward and Treatment Centres & Commissioned Band 2 and Band 3 Accommodation August 2013



Appendix 1: Alcohol attributable fractions

ICD-10 code	ICD-10 name	Alcohol attributable fraction*															
		0-15		16-24		25-34		35-44		45-54		55-64		65-74		75+	
		M	F	M	F	M	F	M	F	M	F	M	F	M	F	M	F
E24.4	Alcohol-induced pseudo-Cushing's syndrome	1.00	1.00	1.00	1.00	1.00	1.00	1.00	1.00	1.00	1.00	1.00	1.00	1.00	1.00	1.00	1.00
F10	Mental and behavioural disorders due to use of alcohol	1.00	1.00	1.00	1.00	1.00	1.00	1.00	1.00	1.00	1.00	1.00	1.00	1.00	1.00	1.00	1.00
G31.2	Degeneration of nervous system due to alcohol	1.00	1.00	1.00	1.00	1.00	1.00	1.00	1.00	1.00	1.00	1.00	1.00	1.00	1.00	1.00	1.00
G62.1	Alcoholic polyneuropathy	1.00	1.00	1.00	1.00	1.00	1.00	1.00	1.00	1.00	1.00	1.00	1.00	1.00	1.00	1.00	1.00
G72.1	Alcoholic myopathy	1.00	1.00	1.00	1.00	1.00	1.00	1.00	1.00	1.00	1.00	1.00	1.00	1.00	1.00	1.00	1.00
I42.5	Alcoholic cardiomyopathy	1.00	1.00	1.00	1.00	1.00	1.00	1.00	1.00	1.00	1.00	1.00	1.00	1.00	1.00	1.00	1.00
K29.2	Alcoholic gastritis	1.00	1.00	1.00	1.00	1.00	1.00	1.00	1.00	1.00	1.00	1.00	1.00	1.00	1.00	1.00	1.00
K70	Alcoholic liver disease	1.00	1.00	1.00	1.00	1.00	1.00	1.00	1.00	1.00	1.00	1.00	1.00	1.00	1.00	1.00	1.00
K86.0	Chronic pancreatitis (alcohol induced)	1.00	1.00	1.00	1.00	1.00	1.00	1.00	1.00	1.00	1.00	1.00	1.00	1.00	1.00	1.00	1.00
T51.0	Ethanol poisoning	1.00	1.00	1.00	1.00	1.00	1.00	1.00	1.00	1.00	1.00	1.00	1.00	1.00	1.00	1.00	1.00
T51.1	Methanol poisoning	1.00	1.00	1.00	1.00	1.00	1.00	1.00	1.00	1.00	1.00	1.00	1.00	1.00	1.00	1.00	1.00
T51.9	Toxic effect of alcohol, unspecified	1.00	1.00	1.00	1.00	1.00	1.00	1.00	1.00	1.00	1.00	1.00	1.00	1.00	1.00	1.00	1.00
X45	Accidental poisoning by and exposure to alcohol	1.00	1.00	1.00	1.00	1.00	1.00	1.00	1.00	1.00	1.00	1.00	1.00	1.00	1.00	1.00	1.00
C00-C14	Malignant neoplasm of lip, oral cavity and pharynx	0.00	0.00	0.50	0.40	0.50	0.35	0.45	0.36	0.53	0.35	0.50	0.33	0.44	0.26	0.36	0.20
C15	Malignant neoplasm of oesophagus	0.00	0.00	0.32	0.23	0.31	0.20	0.30	0.20	0.34	0.20	0.32	0.18	0.26	0.14	0.20	0.10
C18	Malignant neoplasm of colon	0.00	0.00	0.08	0.03	0.08	0.03	0.04	0.03	0.05	0.03	0.05	0.03	0.04	0.02	0.03	0.01
C20	Malignant neoplasm of rectum	0.00	0.00	0.08	0.06	0.09	0.05	0.08	0.05	0.09	0.06	0.08	0.05	0.07	0.03	0.05	0.03
C22	Malignant neoplasm of liver and intrahepatic bile ducts	0.00	0.00	0.16	0.11	0.15	0.10	0.15	0.10	0.17	0.10	0.16	0.09	0.13	0.07	0.10	0.05
C32	Malignant neoplasm of larynx	0.00	0.00	0.34	0.25	0.33	0.21	0.32	0.22	0.36	0.21	0.34	0.20	0.28	0.15	0.22	0.11
C50	Malignant neoplasm of breast	0.00	0.00	0.00	0.00	0.00	0.00	0.00	0.00	0.00	0.00	0.00	0.00	0.00	0.00	0.00	0.00
G40-G41	Epilepsy and Status epilepticus	0.00	0.00	0.56	0.64	0.58	0.55	0.58	0.61	0.61	0.61	0.57	0.51	0.45	0.42	0.35	0.28
I10-I15	Hypertensive diseases	0.00	0.00	0.34	0.24	0.33	0.19	0.32	0.20	0.37	0.20	0.34	0.19	0.27	0.13	0.20	0.09
I47-I48	Cardiac arrhythmias	0.00	0.00	0.35	0.36	0.36	0.38	0.37	0.38	0.38	0.38	0.37	0.33	0.34	0.27	0.30	0.22
I50-I51	Heart failure	0.00	0.00	0.04	0.02	0.04	0.02	0.04	0.02	0.04	0.02	0.04	0.02	0.04	0.02	0.04	0.02
I60-I62, I69.0-I69.2	Haemorrhagic stroke	0.00	0.00	0.31	0.20	0.30	0.15	0.27	0.15	0.34	0.15	0.30	0.13	0.24	0.10	0.16	0.06
I63-I66, I69.3-I69.4	Ischaemic stroke	0.00	0.00	0.16	0.03	0.13	0.00	0.08	0.00	0.18	0.00	0.12	0.00	0.06	0.00	0.00	0.00
I88	Oesophageal varices	0.00	0.00	0.77	0.67	0.79	0.59	0.74	0.60	0.79	0.59	0.77	0.67	0.71	0.48	0.61	0.38
K22.6	Gastro-oesophageal laceration-haemorrhage syndrome	0.00	0.00	0.47	0.47	0.47	0.47	0.47	0.47	0.47	0.47	0.47	0.47	0.47	0.47	0.47	0.47
K73-K74	Chronic hepatitis, not elsewhere classified and fibrosis and cirrhosis of liver	0.00	0.00	0.77	0.67	0.78	0.59	0.74	0.60	0.79	0.59	0.77	0.67	0.71	0.48	0.61	0.38
K85, K86.1	Acute and chronic pancreatitis	0.00	0.00	0.27	0.19	0.27	0.16	0.26	0.16	0.30	0.16	0.27	0.14	0.22	0.10	0.16	0.07
L40	excl. Psoriasis	0.00	0.00	0.34	0.33	0.34	0.33	0.35	0.33	0.36	0.32	0.35	0.31	0.33	0.26	0.30	0.22
L40.0	Psoriasis	0.00	0.00	0.34	0.33	0.34	0.33	0.35	0.33	0.36	0.32	0.35	0.31	0.33	0.26	0.30	0.22
O03	Spontaneous abortion	0.00	0.00	0.00	0.23	0.00	0.21	0.00	0.22	0.00	0.21	0.00	0.20	0.00	0.15	0.00	0.12
S	Pedestrian traffic accident- hospital admission	0.00	0.00	0.36	0.16	0.45	0.19	0.46	0.21	0.46	0.21	0.23	0.03	0.23	0.03	0.23	0.03
S	Pedestrian traffic accident- death	0.00	0.00	0.69	0.50	0.68	0.22	0.51	0.42	0.51	0.42	0.16	0.06	0.16	0.06	0.16	0.06
S5	Road traffic accident (driver/passenger) - hospital admission	0.00	0.00	0.21	0.09	0.33	0.15	0.24	0.12	0.24	0.12	0.09	0.03	0.09	0.03	0.09	0.03
S5	Road traffic accident (driver/passenger) - death	0.00	0.00	0.37	0.18	0.37	0.18	0.37	0.18	0.37	0.18	0.09	0.00	0.09	0.00	0.09	0.00
V50-V54	Water transport accidents	0.00	0.00	0.20	0.20	0.20	0.20	0.20	0.20	0.20	0.20	0.20	0.20	0.20	0.20	0.20	0.20
V55-V57	Airspace transport accidents	0.00	0.00	0.16	0.16	0.16	0.16	0.16	0.16	0.16	0.16	0.16	0.16	0.16	0.16	0.16	0.16
W00-W19	Fall injuries	0.00	0.00	0.22	0.14	0.22	0.14	0.22	0.14	0.22	0.14	0.22	0.14	0.12	0.04	0.12	0.04
W24-W31	Work/machine injuries	0.00	0.00	0.07	0.07	0.07	0.07	0.07	0.07	0.07	0.07	0.07	0.07	0.07	0.07	0.07	0.07
W32-W34	Firearm injuries	0.00	0.00	0.25	0.25	0.25	0.25	0.25	0.25	0.25	0.25	0.25	0.25	0.25	0.25	0.25	0.25
W65-W74	Drowning	0.00	0.00	0.34	0.34	0.34	0.34	0.34	0.34	0.34	0.34	0.34	0.34	0.34	0.34	0.34	0.34
W75-W79	Inhalation of gastric contents/Inhalation and ingestion of food causing obstruction of the respiratory tract	0.00	0.00	0.25	0.25	0.25	0.25	0.25	0.25	0.25	0.25	0.25	0.25	0.25	0.25	0.25	0.25
X00-X09	Fire injuries	0.00	0.00	0.38	0.38	0.38	0.38	0.38	0.38	0.38	0.38	0.38	0.38	0.38	0.38	0.38	0.38
X31	Accidental excessive cold	0.00	0.00	0.25	0.25	0.25	0.25	0.25	0.25	0.25	0.25	0.25	0.25	0.25	0.25	0.25	0.25
**X50-X54, Y10, Y34	Intentional self-harm/Event of undetermined intent	0.00	0.00	0.34	0.36	0.34	0.33	0.36	0.34	0.37	0.34	0.36	0.32	0.31	0.25	0.27	0.20
X85-Y09	Assault	0.00	0.00	0.27	0.27	0.27	0.27	0.27	0.27	0.27	0.27	0.27	0.27	0.27	0.27	0.27	0.27

S: V02-V04 (1, 5), V06.1, V06.2, V09.3
 SS: V10-V16 (1, 3-5), V19A-V19.5, V19.8, V20-V23 (1, 3-5), V29-V29 (1, 4-5), V30.2-V30.5, V31.1, V32.1, V32.5, V33.0-V36 (1, 3-5), V37.0-V37.5, V39.2, V39.3, V39.5
 *An alcohol-attributable fraction is the attributable fraction due to alcohol; i.e. 1 = 100%, 0.25 = 25% of cases are attributable to alcohol. ** Admission codes for alcohol-attributable conditions (previously N39) do not include ICD-10 codes I50-I51 (they become zero when rounded to two decimal places), or Y34. The difference is negligible.

Appendix 2: Failed test purchases for alcohol

April 2010 – March 2013

In total 120 premises were visited, with 21 resulting in sales over this three year period. Full location information is currently available for 18 premises where test purchases resulted in a sale, which are listed below.

Date	Premise	Postcode	Ward	Outcome
02/06/2010	Brighton Bargain, 116 London Road	BN1 4JG	St. Peter's and North Laine	FPN Issued
02/06/2010	Park Road News, 7 Park Road	BN1 9AA	Hollingbury and Stanmer	FPN Issued
23/07/2010	Sky Food and Wine, 17 York Place	BN1 4GU	St. Peter's and North Laine	FPN Issued
30/10/2010	Brighton Bargain, 116 London Road	BN1 4JG	St. Peter's and North Laine	FPN Issued
17/12/2010	Student Union Shop, Sussex University, Falmer	BN1 9QF	Hollingbury and Stanmer	FPN Issued
04/11/2011	Park Road News, 7 Park Road	BN1 9AA	Hollingbury and Stanmer	FPN Issued
15/12/2011	Park Road News, 7 Park Road	BN1 9AA	Hollingbury and Stanmer	Licence Review/Licence Revoked
15/12/2011	Wahoo, West Street	BN1 2RA	Regency	FPN Issued
18/02/2012	Brighton Bargains, 116 London Road	BN1 4JG	St. Peter's and North Laine	FPN Issued / Seller attended Training
12/04/2012	Wine Lodge, 69 Moulsecomb Way	BN2 4PB	Moulsecomb and Bevendean	FPN Issued
06/06/2012	K & A News, 5 St Georges Road,	BN2 1EB	Queen's Park	FPN Issued
20/08/2012	Buy 2 Win, 24 Western Road	BN3 1AF	Brunswick and Adelaide	FPN Issued
20/08/2012	K & A News, 5 St Georges Road	BN2 1EB	Queen's Park	FPN Issued / Licence Review with 8 weeks
20/08/2012	St Mary's Store 2, 1A Air Street	BN1 3FB	St. Peter's and North Laine	FPN Issued
20/08/2012	The Ofie, 1A Whitehawk Road	BN2 5FA	East Brighton	FPN Issued
29/10/2012	B & W Stores, 29 York Place	BN1 4GU	St. Peter's and North Laine	FPN Issued
29/10/2012	Margery Stores, 374 Old Shoreham Road	BN3 7HA	Hangleton and Knoll	FPN Issued / Seller attended Training
21/02/2013	Brakes Newsagent And Post Office, 7 Hollingbury Place,	BN1 7GE	Hollingbury and Stanmer	FPN Issued